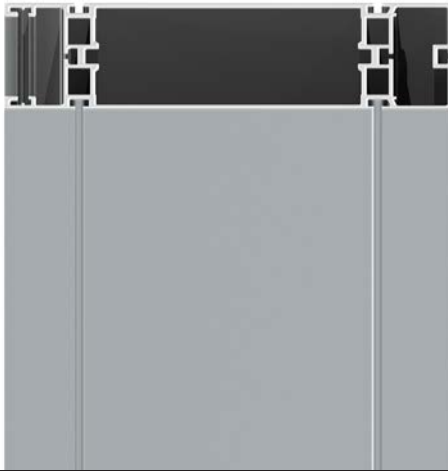


OCTA RIG



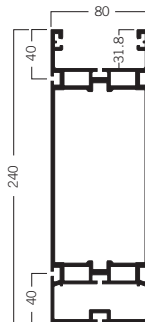
OCTARIG

SUSPENDED



**A CLASSIC.
WIDE SPANS.
WITHOUT COMPROMISE.**

R 102 DIMENSIONS IN MM:



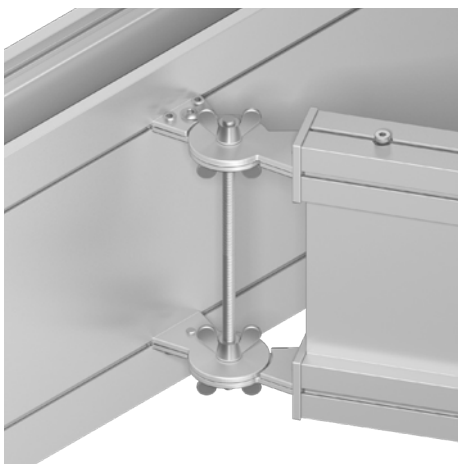
1 system. 3 designs.

Suspended, elevated or as pylon construction – OCTARig gives you the freedom to realize any desired booth concept. The result is a quickly built up and stable construction in compliance with local regulations to hold your equipment.

Compatible. Flexible. Adjustable.

Invisible cable management, track mounting and countless possibilities to individualize the system make it ideal for the construction of your project. Rotated through 180°, the power rails can already be prefitted on the floor. With its high load capacity, OCTARig sets standards in terms of safety both in connection with stage and event technologies and no matter if used with hanging banners or fabric tensioning.

ANGLE ADJUSTMENT WITH R 350 AND M 770:

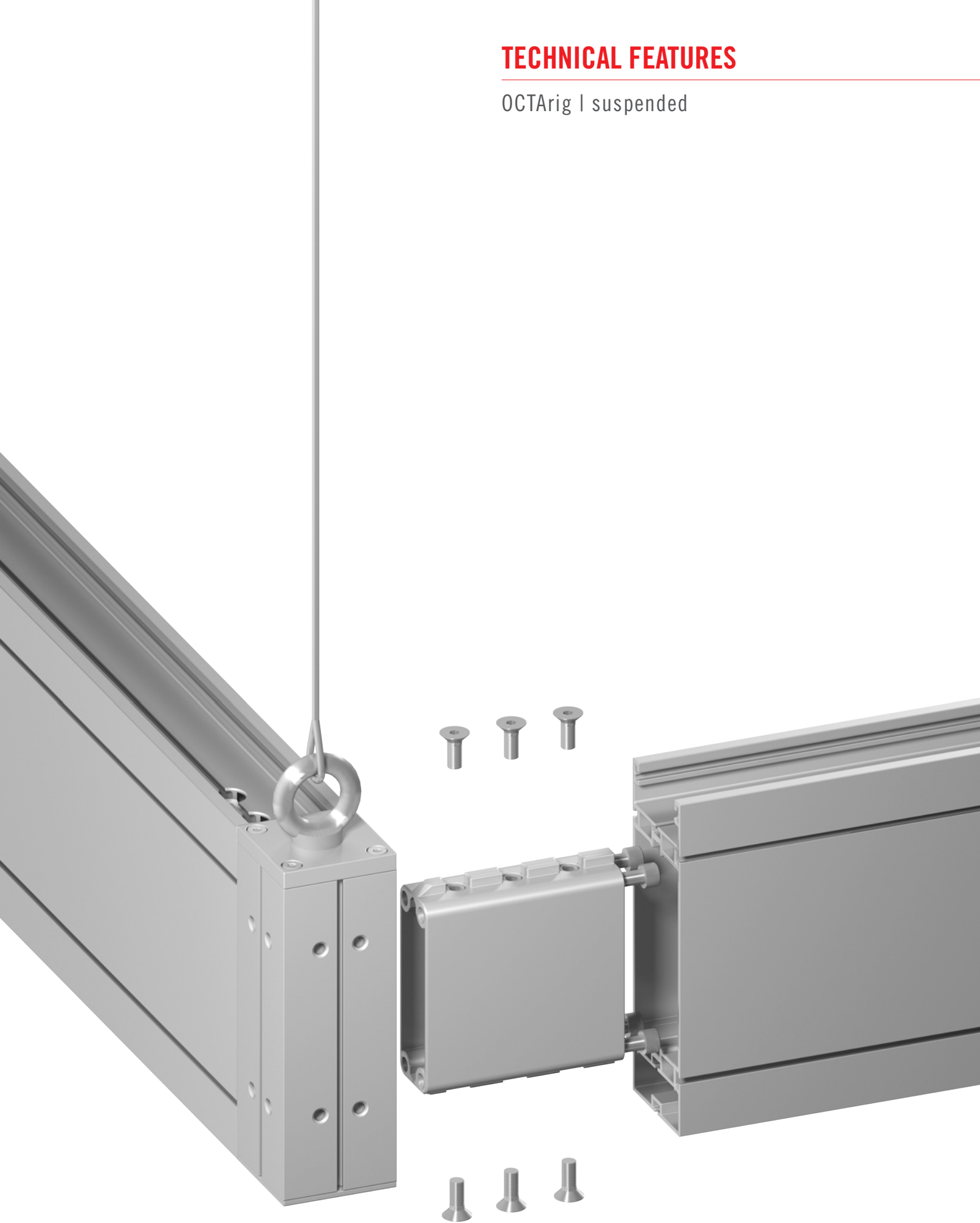


Technical Details:

- wide span of up to 12 m
- high load capacity
- easy assembly with only a few parts
- invisible cable management
- individual design possibilities
- compatible with stage and event technologies
- connection at variable angles with hinged elements
- power rail mounting

TECHNICAL FEATURES

OCTArig I suspended



OCTARIG

ELEVATED



**STABILITY.
HIGH LOAD CAPACITY.
MOUNTED ON UPRIGHTS.**

R 102 TURNED 180°:



No suspension points on site? No problem.

A venue's ceiling construction does not always allow for the suspension of the OCTARig system. Elevated, the system opens up completely new possibilities: up to 6 m ceiling height – even without any suspension points.

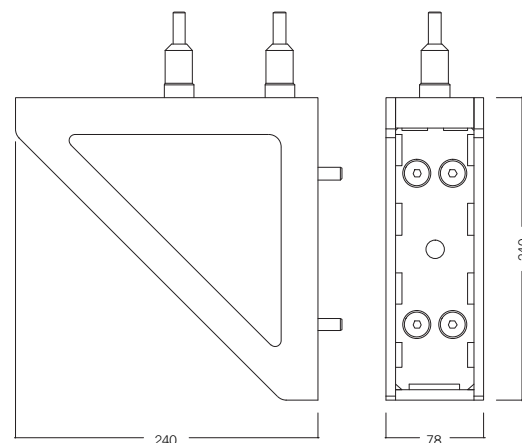
OCTARig – stable on uprights.

The new R 210 connector is firmly screwed to the upright. OCTARig cannot only be suspended from the ceiling but is also firm and stable on uprights. The reinforcement R 240 provides additional stability and higher load capacity. The construction can be premounted on the floor and elevated to the corresponding height using lifting gear.

ROUND TUBE MOUNTED WITH R 362:

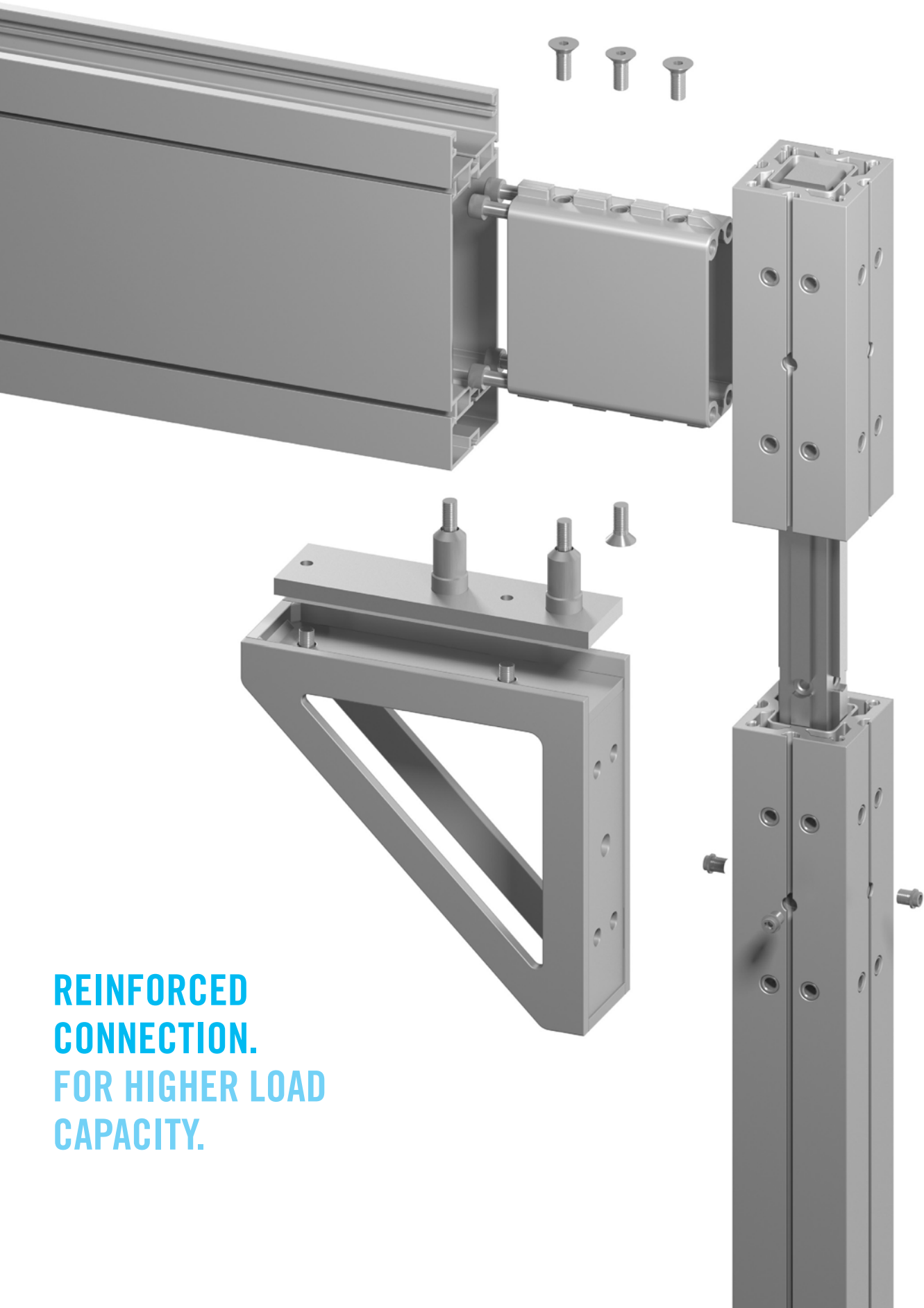


R 240 DIMENSIONS IN MM:



TECHNICAL FEATURES

OCTArig I elevated



**REINFORCED
CONNECTION.
FOR HIGHER LOAD
CAPACITY.**

OCTARIG AS PYLON



**ROOFED.
SELF-SUPPORTING.
THE PYLON DESIGN.**

ADDITIONAL BEAM RETAINER R 320:



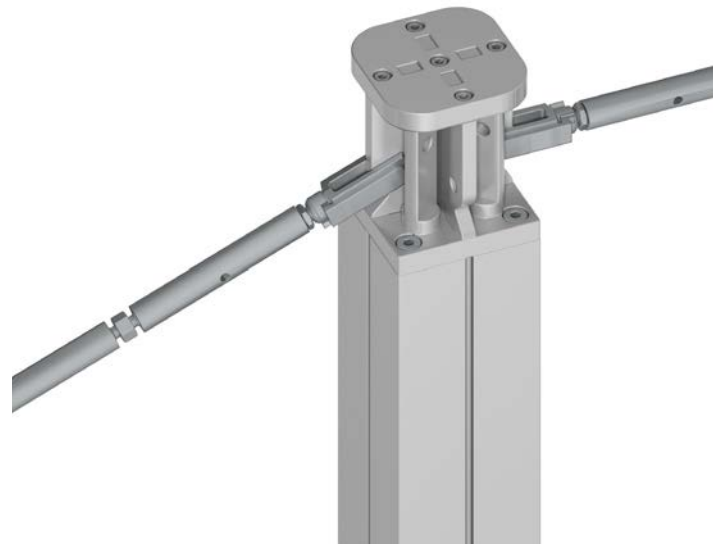
Pylon – outstanding 3 m.

The pylon design allows for the construction of self-supporting corners of up to 3 m, held only by clamping elements without the need for additional ceiling suspension. A solid ceiling construction, independent of suspension points or supporting ceiling elements on-site – just the way you want it.

Fewer uprights. More exhibition space.

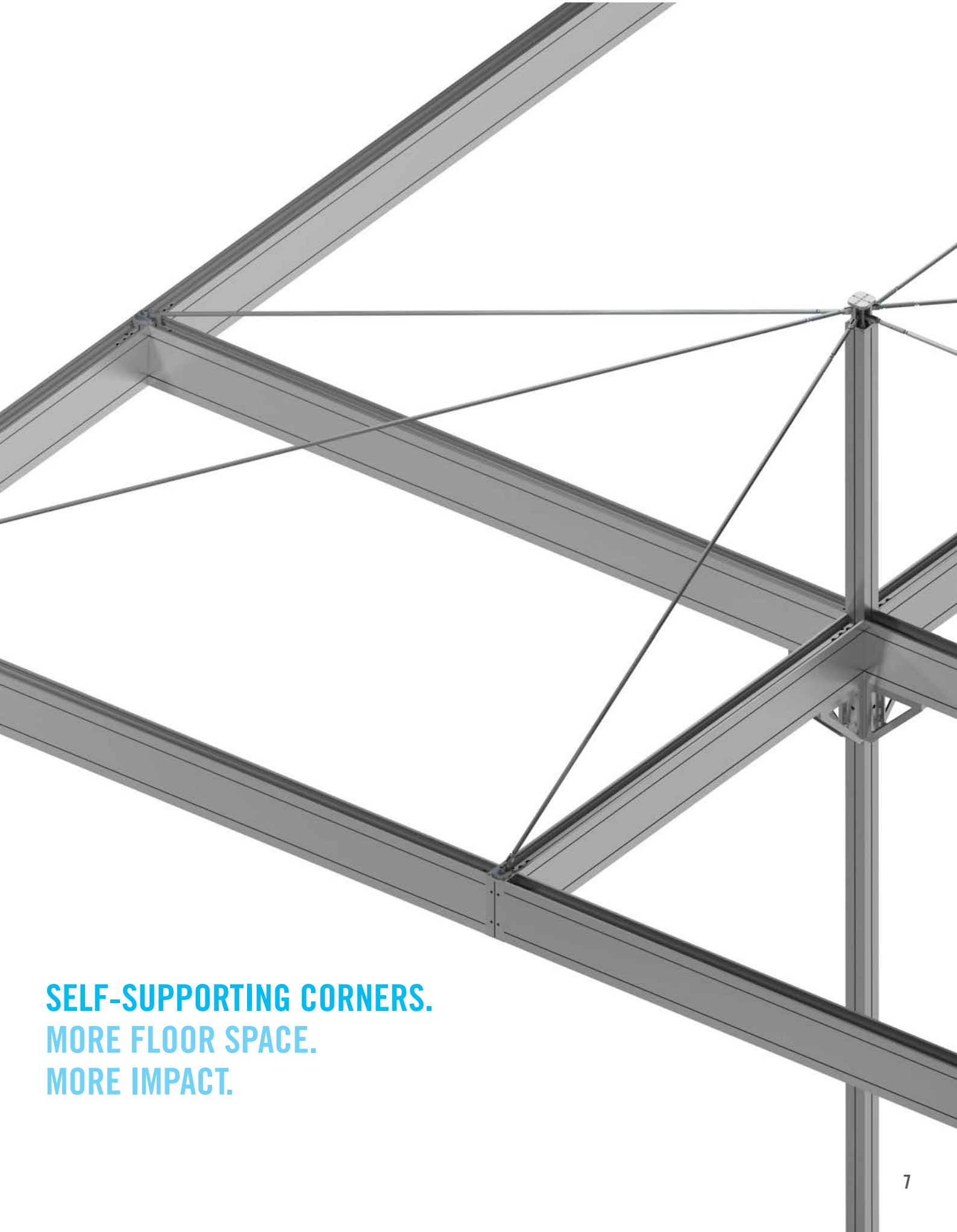
Maximum floor space with a system featuring a simple design that easily fits into every stand architecture. Wherever you decide to place the uprights, OCTARig gives you the freedom you need for your presentation area.

PYLON CONSTRUCTION: R 102 IN CONNECTION WITH TENSION BRACE JUNCTION KNOT



TECHNICAL FEATURES

OCTArig | Pylon



**SELF-SUPPORTING CORNERS.
MORE FLOOR SPACE.
MORE IMPACT.**



 Zeelandia

Releasing
your
potential

 Zeelandia

For the
love
of
chocolate

 Zeelandia

for the
love
of
healthy
lifestyle

Boulangerie

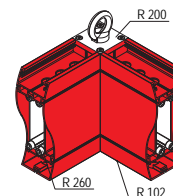
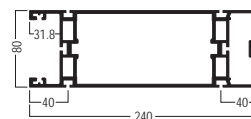
Sourdough and Boiled Grains & Seeds

SUPPORTING BEAM 240 × 80 MM



R 102.01

Aluminium I for adaptor R 260 and connector R 290, for installation of 4 × tension lock Z 961/13
L 6930 × W 240 × H 80 mm
I 53.23 kg

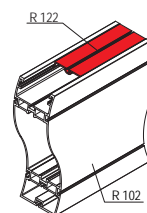
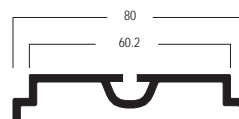


COVER EXTRUSION FOR R 102



R 122.01

Aluminium I for use with supporting beam extrusion R 102
L 6930 × W 80 × H 14 mm
I 4.32 kg

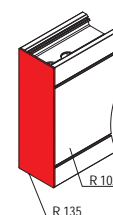
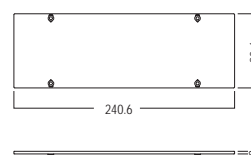


END PLATE FOR R 102



R 135.21

Steel I for use with supporting beam R 102, incl. 4 × set screw M 1075/20 (M4)
L 241 × W 81 × H 8 mm
I 0.47 kg

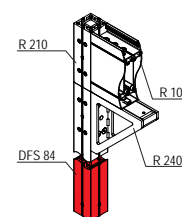
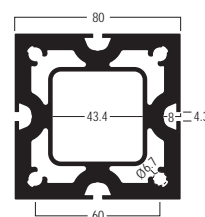


UPRIGHT EXTRUSION AS UPRIGHT

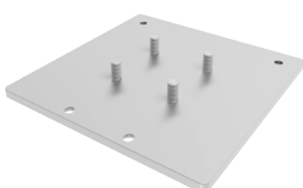


DFS 84.01

Aluminium I for upright, upright extension and upright pylon extension, to be used as supporting upright on the first floor or to extend upright DFS 2510 and DFS 2760 on the second floor, incl. 2 × clamping screw M12
L 5040 × W 80 × H 80 mm
I 38.95 kg

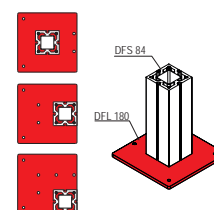
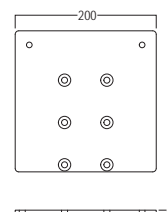


BASE PLATE FOR DFS 84



DFL 180.37

Steel I for upright DFS 84 / DFL 150, for centre, edge or corner setup, with 6 × drill hole for countersunk screw M8, incl. 4 × screw M8 × 25 DFL 180/20
L 200 × W 200 × H 8 mm
I 2.53 kg



Processing
Notes
see page 16

COMPONENTS

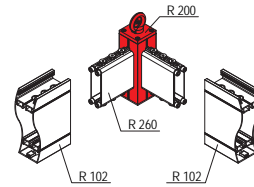
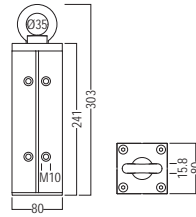
OCTArig

CONNECTOR FOR R 260



R 200.01

Aluminium/Steel I to mount adaptor R 260 in case of suspension, incl. eyelet 35 mm dia., with 16 × thread M10
L 80 × W 80 × H 303 mm
I 2.92 kg



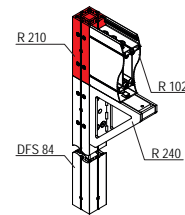
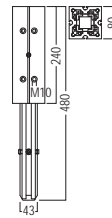
! Attention: max. load capacity 500 kg

CONNECTOR FOR R 260/DFS 84



R 210.37

Aluminium/Steel I to mount adaptor R 260, for elevation of the construction, plug on and screw to uprights made of DFS 84, incl 16 × thread M10
L 80 × W 80 × H 480 mm
I 7.02 kg

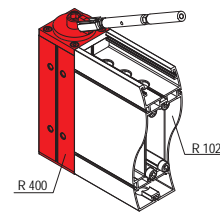


CONNECTOR FOR PYLON CONSTRUCTION



R 400.37

Aluminium/Steel I for pylon construction with tension brace junction knot R 408, to screw on adaptor R 260, incl. 16 × thread M10
L 80 × W 80 × H 273 mm
I 1.98 kg

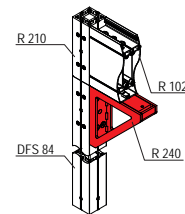
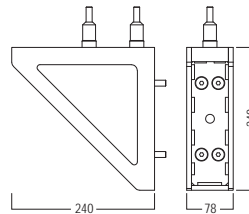


ANGLE REINFORCEMENT FOR R 260/DFS 84



R 240.37

Steel I for reinforcement of elevated OCTArig designs, for connector R 260 and upright extrusion DFS 84, two-piece, incl. 4 × countersunk screw DFL 340/5S(M8), 2 × countersunk screw R 240/20 (M8) and 2 × countersunk screw R 240/21 (M8)
L 240 × W 240 × H 240 mm
I 6.15 kg



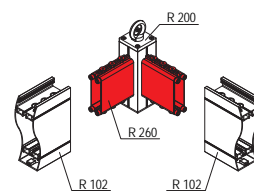
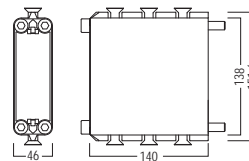
! Attention: R 260 required for assembly of upright DFS 84 with R 210 and R 102.

CONNECTOR PART FOR DFS 84/R 102



R 260.01

Aluminium I to mount to upright extrusion DFS 84 and supporting beam R 102, incl. 4 × cylinder screw R 260/21 (M10) and 6 × countersunk screw DFL 340/5S (M10)
L 140 × W 152 × H 46 mm
I 1.15 k



! Attention: R 260 required for mounting of supporting beam R 102 between two upright extrusions DFS 84.

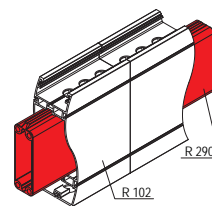
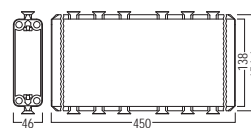
Attention: R 290 required for mounting of extended supporting beam between two upright extrusions DFS 84.

CONNECTOR STRAIGHT

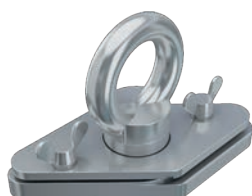


R 290.01

Aluminium I straight, for connection of 2 x supporting beam R 102, incl. 12 x countersunk screw DFL 340/5S (M10)
L 450 x W 152 x H 46 mm
I 2.30 kg



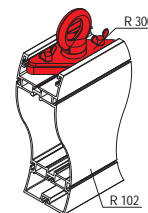
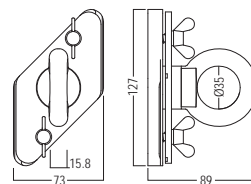
FIXING SET FOR ROPE SUSPENSION



Attention: max. load capacity 300 kg

R 300.37

Steel I to turn into supporting beam extrusion R 102, for rope suspension, with eyelet 35 mm dia.
L 73 x W 127 x H 89 mm
I 1.06 kg

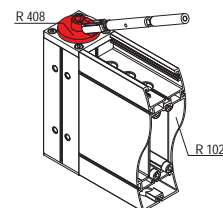
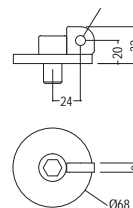


TENSION BRACE JUNCTION KNOT FOR R 200



R 408.37

Steel I for modification of connector R 200, incl. 1 x cylinder screw R 408-20 (M16)
L 70 x W 70 x H 32 mm
I 0.32 kg

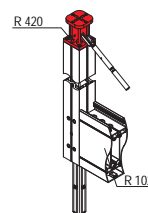
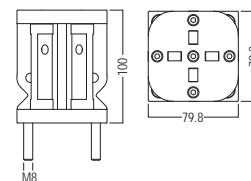


TENSION BRACE JUNCTION KNOT FOR DFS 84

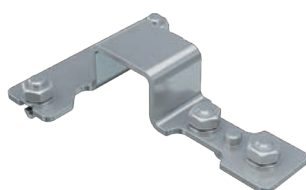


R 420.37

Steel I to mount to upright pylon extension DFS 84, incl. 4 x cylinder screw R 200-20 (M8)
L 80 x W 80 x H 12 mm
I 2.25 kg



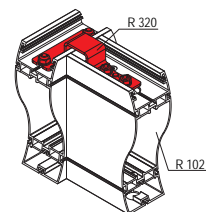
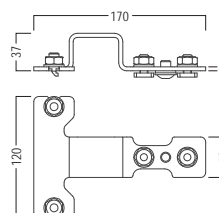
BEAM RETAINER FOR 2 x R 102



Attention: necessary for safety reasons.

R 320.37

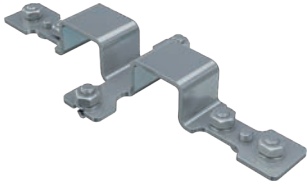
Steel I for additional securing of 2 x supporting beam R 102 at an angle of 90°, incl. 2 x hammerhead screw M 810/HA (M10) and 2 x hammerhead screw E 265 (M10)
L 120 x W 170 x H 37 mm
I 0.46 kg



COMPONENTS

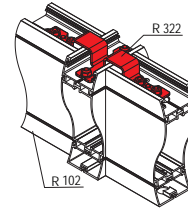
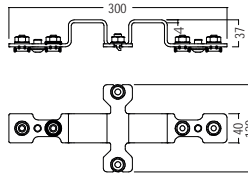
OCTArig

BEAM RETAINER FOR 3 × R 102



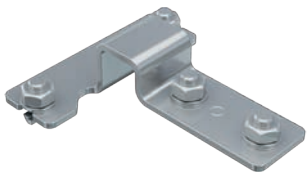
R 322.37

Steel I for additional securing of 3 × supporting beam R 102 at an angle of 90°, incl. 2 × hammerhead screw M 810/HA (M10) and 4 × hammerhead screw E 265 (M10)
L 408 × W 120 × H 37 mm
I 0.90 kg



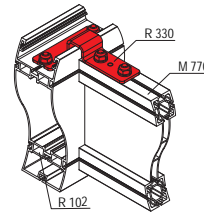
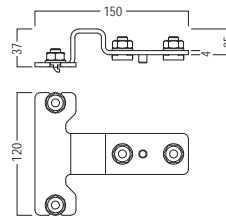
! Attention: necessary for safety reasons.

BEAM RETAINER FOR R 102 + M 770



R 330.37

Steel I for additional securing of supporting beam M 770 to supporting beam R 102 at an angle of 90°, incl. 4 × hammerhead screw M 810/HA (M10)
L 120 × W 150 × H 37 mm
I 0.43 kg



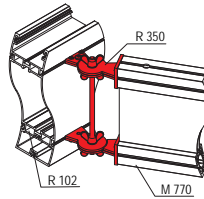
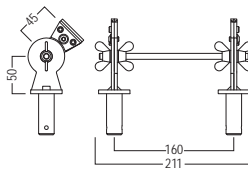
! Attention: necessary for safety reasons.

HINGED END PLATE SET FOR R 102 + M 770



R 350.21

Steel I for connection of supporting beam M 770 to supporting beam R 102 at variable angles, consisting of 2 × hinged flange plate M 1557 and 1 × wing nut set R 350/FS
L 155 × W 49 × H 211 mm
I 1.92 kg



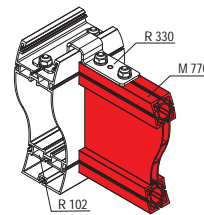
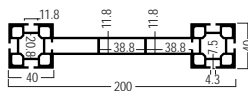
! Attention: max. load capacity 100 kg

SUPPORTING BEAM 200 × 40 MM



M 770.01

Aluminium I 2 × tension lock Z 961/8 can be mounted in 2 positions or 3 × tension lock Z 961/13 with adaptor Z 161/A
L 7000 × W 200 × H 40 mm
I 35.53 kg

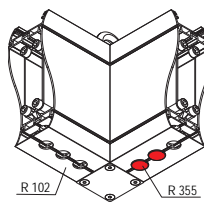
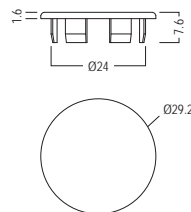


END CAP



R 355.35

Plastic I to cover drill holes with Ø 24 mm
L 29 × W 29 × H 8 mm
I 0.01 kg

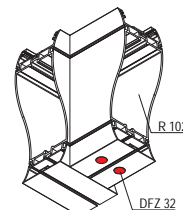


END CAP



DFZ 32.35

Plastic | to cover drill holes
with $\varnothing 13$ mm
L 17 × W 17 × H 7.2 mm
I 0.01 kg

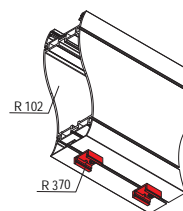
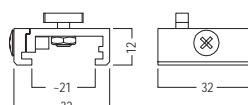


FIXING CLIP FOR POWER RAILS



R 370.21

Aluminium | for mounting power
rails to 4.3 mm system groove,
with 1 × clamping screw M4 and
fixing accessories M5 (SW 8 mm)
L 32 × W 32 × H 12 mm
I 0.02 kg



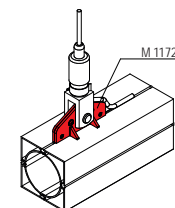
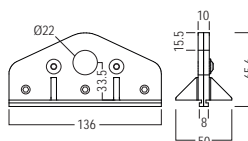
ADAPTOR FOR ROPE SUSPENSION



Attention: max.
load capacity
150 kg

M 1172.37

Steel | usable for rope suspension,
for connection to 4.3 mm system
groove, incl. 3 × set screw M
1435/70 (M8) and 2 × lenticular
flange head screw M 1557/20
(M6)
L 136 × W 66 × H 50 mm
I 0.53 kg



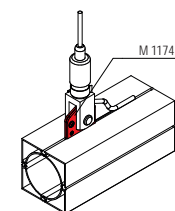
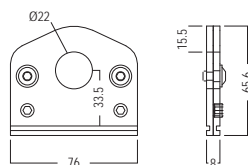
ADAPTOR FOR ROPE SUSPENSION



Attention: max.
load capacity
100 kg

M 1174.37

Steel | usable for rope suspension,
for connection to 4.3 mm system
groove, incl. 2 × set screw M
1435/70 (M8) and 2 × lenticular
flange head screw M 1557/20
(M6) L 76 × W 66 × H 4 mm
I 0.25 kg

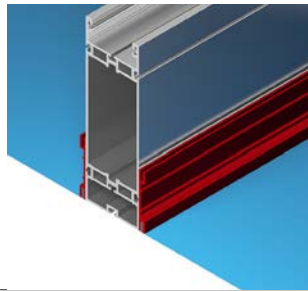


COMPONENTS

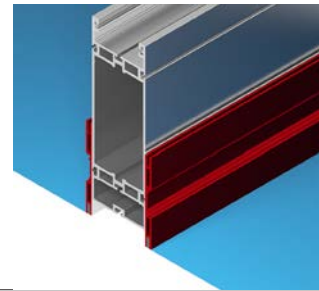
OCTArig

R 102 – FABRIC MOUNTING

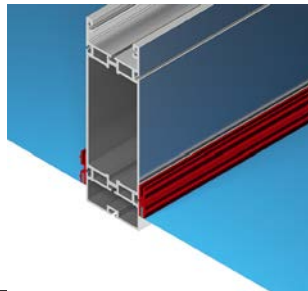
M 1325



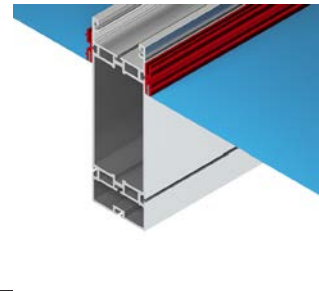
M 1330



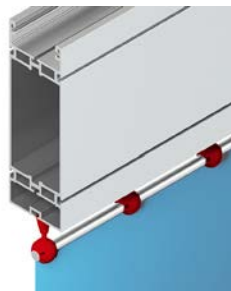
M 1310



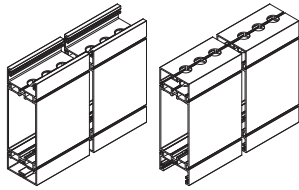
M 1310



M 1449



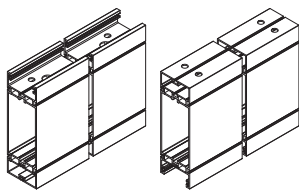
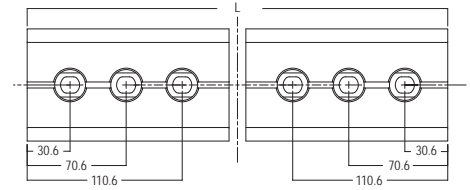
PROCESSING NOTES



B 142

Processing of rectangular beam extrusion R 102 for use with adaptor connector R 260 and internal connector straight R 290

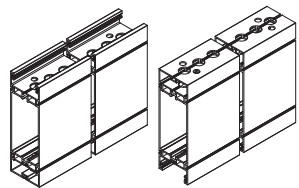
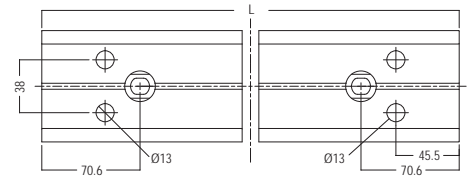
12 × stepped hole



B 147

Processing of rectangular beam extrusion R 102 for use with rectangular beam extrusion R 102

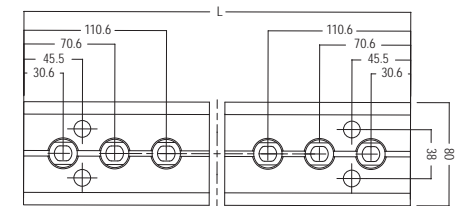
2 × stepped hole
8 × drilling Ø 13 mm



B 143

Processing of rectangular beam extrusion R 102
Step drilling for adaptor connector R 260, internal connector R 290 / R 295 and drillings for tension lock Z 961/13

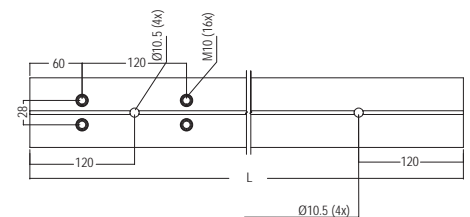
6 × step drilling on both sides
4 × drilling on both sides



B 148

Processing of upright extrusion DFS 84 for use with upright extrusion DFS 84 as connector

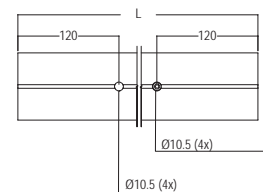
16 × thread M10,
4 × drilling Ø 10.5 mm,
8 × M8 threads in the core holes



B 149

Processing of upright extrusion DFS 84 for use with upright extrusion DFS 84 as connector

8 × drilling Ø 10.5 mm
8 × M8 threads in the core holes





Verosol


Verosol

SilverScreen
A RANGE OF METALLISED FABRICS

em
MACHINERY FOR BLINDS
MILAN - ITALY

tecno system

Halle 5
Hall 5 →



EXHIBITION SYSTEMS
PROJECT SOLUTIONS
PRESENTATION
INTERIOR DESIGN
CLEANROOM SYSTEMS

OCTANORM® Germany

Head Office

Raiffeisenstraße 39
70794 Filderstadt
T. +49 711 77003-0
F. +49 711 77003-53
info@octanorm.de
www.octanorm.com

EUROPE

OCTANORM® Nordic

T. +46 8 621 6500
www.octanorm.se

OCTANORM® Polska

T. +48 22 773 0350
www.octanorm.pl

OCTANORM® Belgium

T. +32 475 35 60 76
www.octanorm.be

OCTANORM® France

T. +33 6 79 11 32 05
www.octanorm.fr

OCTANORM® UK

T. +44 20 85 45 2945
www.octanorm.co.uk

OCTANORM® Espana

T. +34 930 019 424
www.octanorm.es

OCTANORM® Hellas

T. +30 2310 79 6521
www.octanorm.gr

OCTANORM® Italia

T. +39 031 2269715
www.octanorm.it

OCTANORM® Adria

T. +386 590 56301
www.octanormadria.com

AFRICA

OCTANORM® Nigeria

T. +234 8030 8211 91
www.it-al.design

OCTANORM® South Africa

T. +27 11 433 2010
www.octanorm.co.za

AMERICA

OCTANORM® North America

T. +1 770 7 32 1520
www.octanormna.com

OCTANORM® México

T. +52 55 5804 6325
www.octanorm.com.mx

AUSTRALIA

OCTANORM® Australia

T. +61 3 7017 2753
www.octanorm.com.au

ASIA

OCTANORM® China

T. +86 512 6283 3336
www.octanorm.cn

OCTANORM® Japan

T. +81 45 511 8144
www.octanorm.co.jp

MIDDLE EAST

OCTANORM® Emirates

T. +971 4 340 6888
www.octanormemirates.net